

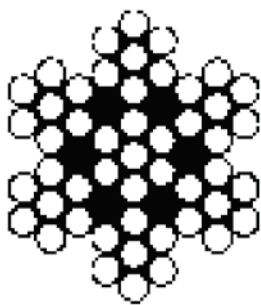


Drahtseilsystem

Wire system / Câbles et accessoires / Funi e accessori



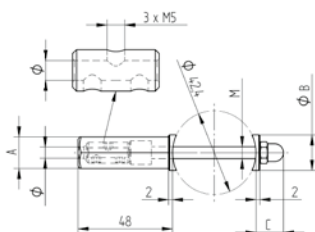
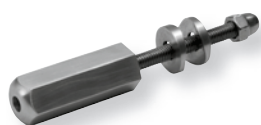
3



#	Material	Ø	Rolle à
CN8800010	V2A; AISI 304	4,0 mm	25 m
CN8800020	V2A; AISI 304	5,0 mm	25 m
CN8800030	V2A; AISI 304	6,0 mm	25 m
CN8800040	V2A; AISI 304	8,0 mm	25 m
CN8800015	V2A; AISI 304	4,0 mm	100 m
CN8800025	V2A; AISI 304	5,0 mm	100 m
CN8800035	V2A; AISI 304	6,0 mm	100 m
CN8800045	V2A; AISI 304	8,0 mm	100 m
CN8800011	V4A; AISI 316	4,0 mm	25 m
CN8800021	V4A; AISI 316	5,0 mm	25 m
CN8800031	V4A; AISI 316	6,0 mm	25 m
CN8800016	V4A; AISI 316	4,0 mm	100 m
CN8800026	V4A; AISI 316	5,0 mm	100 m
CN8800036	V4A; AISI 316	6,0 mm	100 m

Drahtseil

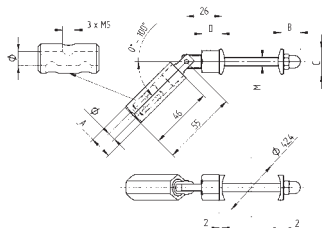
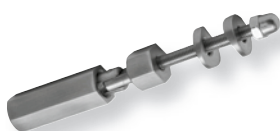
Wire / Câble inox / Fune



#	Material	Drahtseil	Ø	M	A	B	C
geschliffen / satin finish / brossé / satinato							
CN8800524	V4A; AISI 316	4,0 mm	5,7	6	16	18	12
CN8800525	V4A; AISI 316	5,0 mm	5,7	6	16	18	12
CN8800526	V4A; AISI 316	6,0 mm	7,0	8	19	22	15

Schraubterminal

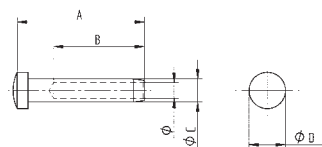
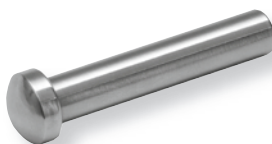
Terminal / Embout pour câble / Terminale a vite



#	Material	Drahtseil	Ø	M	A	B	C	D
geschliffen / satin finish / brossé / satinato								
CN8800554	V4A; AISI 316	4,0 mm	5,7	6	16	12	18	14,5
CN8800555	V4A; AISI 316	5,0 mm	5,7	6	16	12	18	14,5
CN8800556	V4A; AISI 316	6,0 mm	7,0	8	19	15	22	17,0

Schraubterminal

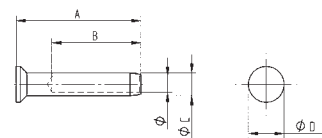
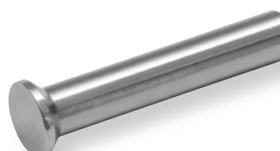
Terminal with joint / Embout orientable pour câble / Terminale a vite



#	Material	Drahtseil	Ø	A	B	C	D
geschliffen / satin finish / brossé / satinato							
CN8802840	V4A; AISI 316	4,0 mm	4	35	25	6,5	10
CN8802850	V4A; AISI 316	5,0 mm	5	41	30	7,5	12
CN8802860	V4A; AISI 316	6,0 mm	6	52	40	9,0	14

Linsenkopfterminal

Terminal / Embout bombé à sertir / Terminale testa bombata



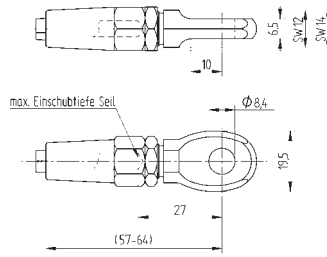
#	Material	Drahtseil	Ø	A	B	C	D
geschliffen / satin finish / brossé / satinato							
CN8802940	V4A; AISI 316	4,0 mm	4,4	35	25	6,4	10
CN8802950	V4A; AISI 316	5,0 mm	5,3	41	30	7,5	12
CN8802960	V4A; AISI 316	6,0 mm	6,5	52	40	9,0	14

Senkkopfterminal

Terminal counter sunk / Embout plat à sertir / Terminale testa svasata

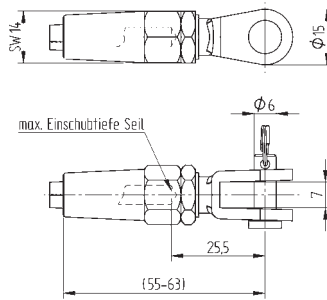
#	Material	Drahtseil
CN8800100	V4A; AISI 316	4,0 mm

Augenterminal
Terminal / Embout à oeil / Terminale ad occhio



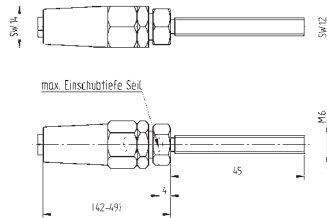
#	Material	Drahtseil
CN8800200	V4A; AISI 316	4,0 mm

Gabelterminal
Threaded terminal / Embout à chape / Terminale a forcilla



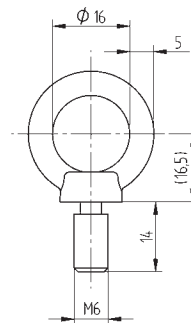
#	Material	Drahtseil
CN8800300	V4A; AISI 316	4,0 mm

Gabelterminal
Threaded terminal / Embout à tige / Terminale a forcilla



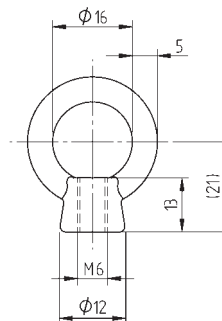
#	Material	Gewinde
CN8800600	V4A; AISI 316	M6

Ringöse
Ring eye / Anneau à tige/ Golfare maschio, Femmina



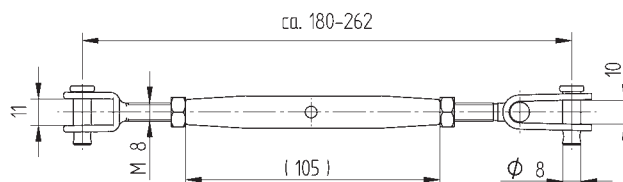
#	Material	Gewinde
CN8800700	V4A; AISI 316	M6
CN8800710	V2A; AISI 304	M6

Ringöse
Ring eye / Anneau taraudé/ Golfare maschio, Femmina

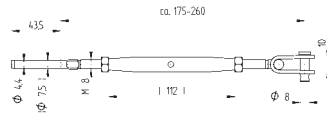


#	Material
CN8800400	V4A; AISI 316

Seilspanner mit 2 Gabeln
Tensioner with 2 brackets / Tendeur de câble à 2 chapes / Tensionatore con 2 forcelle



3



Material

CN8800500 V4A; AISI 316

Seilspanner mit 1 Gabeln

Tensioner with 1 brackets / Tendeur de câble à 1 chapes / Tensionatore con 1 forcelle

Material

CN8802710 V4A; AISI 316

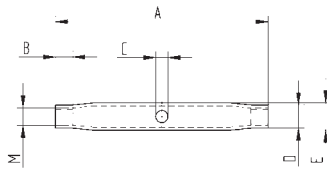
#	Material	A	B	C	D	E	M
CN8802710	V4A; AISI 316	92	10	3,5	8	10	6
CN8802720	V4A; AISI 316	122	11	7,5	13	16	10

Mittelstück

Center / Corps de tendeur / Elemento centrale

mit Innengewinde

with inner thread / taraudé / con filettatura interna dx/sx



Material Gewinde A B C D E M

geschliffen / satin finish / brossé / satinato

CN8802810	V4A; AISI 316	R	100	55	40	4,3	7,5	6
CN8802815	V4A; AISI 316	L	100	55	40	4,3	7,5	6
CN8802820	V4A; AISI 316	L	130	70	63	6,5	12,5	10
CN8802825	V4A; AISI 316	R	130	70	63	6,5	12,5	10

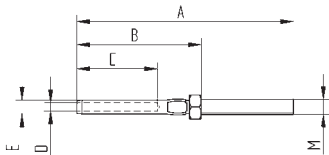


Quetschhülse

Wire terminal / Tige à sertir / Terminale da pressare

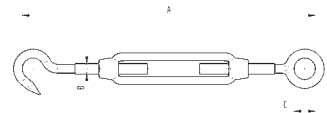
mit Außengewinde, rechts- und linksgängig, inkl. Kontermutter

terminal for compression / fileté, pas à droite (R) ou à gauche (L), contre-écrou compris / con filettatura esterna destra o sinistra, dado incluso



Material Drahtstärke A B C

CN8800810	V4A; AISI 316	4,0 mm	ca. 93 – 128	M4	8,5
CN8800820	V4A; AISI 316	5,0 mm	ca. 110 – 163	M5	8,5
CN8800830	V4A; AISI 316	6,0 mm	ca. 144 – 212	M6	11,0



Spannschloss

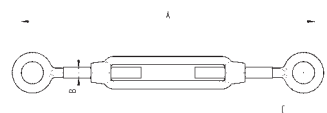
Turnbuckle / Tendeur / Tensionatori

1 Öse, 1 Haken

1 eye, 1 hook / 1 oeil, 1 crochet / 1 gancio, 1 occhiello

Material Drahtstärke A B C

CN8800910	V4A; AISI 316	4,0 mm	ca. 93 – 128	M4	8,5
CN8800920	V4A; AISI 316	5,0 mm	ca. 110 – 163	M5	8,5
CN8800930	V4A; AISI 316	6,0 mm	ca. 144 – 212	M6	10,5



Spannschloss

Turnbuckle / Tendeur / Tensionatori

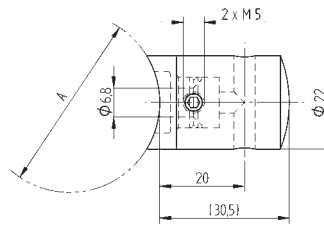
2 Ösen

2 eye / 2 oeil / 2 occhielli

#	Material	Drahtstärke	A
CN8801110	V4A; AISI 316	4,0 mm	Ø 33,7
CN8801120	V4A; AISI 316	4,0 mm	Ø 42,4
CN8801130	V4A; AISI 316	4,0 mm	gerade
CN8801210	V4A; AISI 316	5,0 mm	Ø 33,7
CN8801220	V4A; AISI 316	5,0 mm	Ø 42,4
CN8801230	V4A; AISI 316	5,0 mm	Ø 48,3
CN8801240	V4A; AISI 316	5,0 mm	gerade
CN8801310	V4A; AISI 316	6,0 mm	Ø 33,7
CN8801320	V4A; AISI 316	6,0 mm	Ø 42,4
CN8801330	V4A; AISI 316	6,0 mm	Ø 48,3
CN8801340	V4A; AISI 316	6,0 mm	gerade

Traversenhalter

Cross holder / Support pour câble bombé / Supporto fune

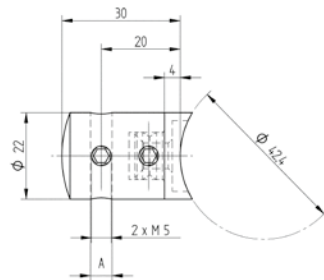


3

#	Material	Drahtseil	A
geschliffen / satin finish / brossé / satinato			
CN8802040	V4A; AISI 316	4,0 mm	4,5
CN8802050	V4A; AISI 316	5,0 mm	5,5
CN8802060	V4A; AISI 316	6,0 mm	6,5

Traversenhalter

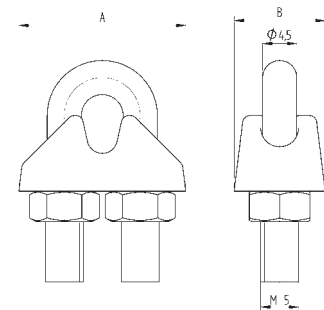
Cross holder / Support pour câble bombé / Supporto fune a morsetto



#	Material	Drahtseil	A	B
CN8801010	V4A; AISI 316	4,0 mm	22	10
CN8801020	V4A; AISI 316	5,0 mm	24	11
CN8801030	V4A; AISI 316	6,0 mm	26	12
CN8801040	V4A; AISI 316	8,0 mm	30	14

Schraubklemme

Rope clamp / Serre-câble étrier / Morsetto fune



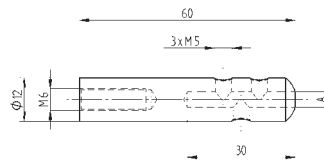
#	Material	Drahtstärke	A
CN8801510	V4A; AISI 316	4,0 mm	Ø 4,1
CN8801520	V4A; AISI 316	5,0 mm	Ø 5,1
CN8801530	V4A; AISI 316	6,0 mm	Ø 6,1

Anschlussstück

Joint connector / Connecteur taraudé / Connettore

mit einseitigem Innengewinde M6

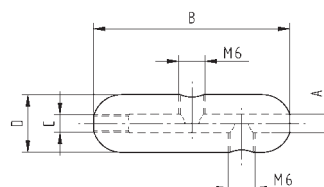
one sided thread / taraudé M6 à une extrémité / con filettatura interna M6 ad un lato



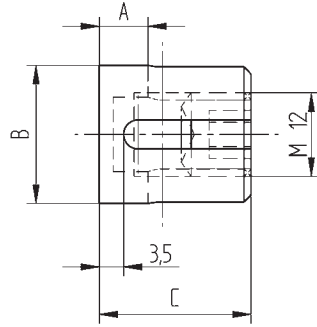
#	Material	Drahtstärke	A	B	C	D
CN8801400	V4A; AISI 316	3,0 mm	Ø 3,1	45	M3	Ø 12
CN8801410	V4A; AISI 316	4,0 mm	Ø 4,1	45	M4	Ø 13
CN8801420	V4A; AISI 316	5,0 mm	Ø 5,1	65	M5	Ø 14
CN8801430	V4A; AISI 316	6,0 mm	Ø 6,1	65	M6	Ø 14

Verbindungsstück

Connectors / Raccords / Connettori



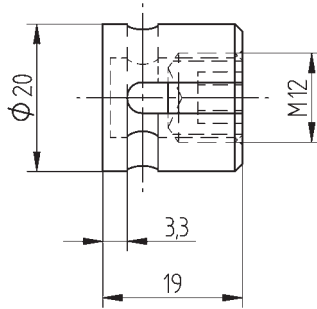
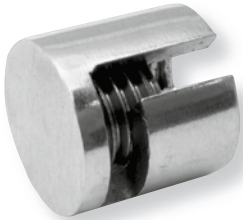
3



#	Material	Drahtstärke	A	B	C
CN8801810	V4A; AISI 316	4,0 mm	7	20	22
CN8801820	V4A; AISI 316	5,0 mm	8	21	23
CN8801830	V4A; AISI 316	6,0 mm	9	22	24

Seilstopper 90°

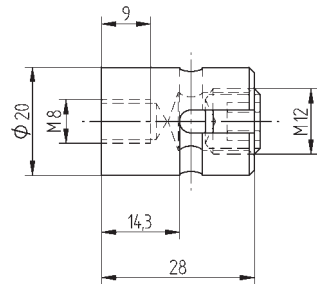
Cable stop 90° / Arrêt butoir 90° / Fermafune 90°



#	Material	Drahtstärke
CN8801910	V4A; AISI 316	4,0 mm
CN8801920	V4A; AISI 316	5,0 mm
CN8801930	V4A; AISI 316	6,0 mm

Seilstopper 180°

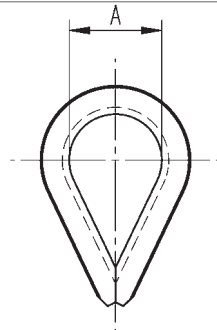
Cable stop 180° / Arrêt butoir 180° / Fermafune 180°



#	Material	Drahtstärke
CN8802010	V4A; AISI 316	4,0 mm
CN8802020	V4A; AISI 316	5,0 mm
CN8802030	V4A; AISI 316	6,0 mm

Seilstopper 180°

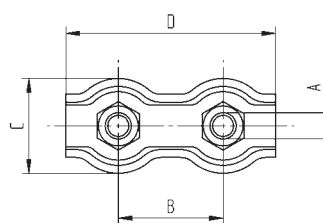
Cable stop 180° / Arrêt butoir 180° / Fermafune 180°



#	Material	Drahtstärke	A
CN8801710	V4A; AISI 316	4,0 mm	ca. 10
CN8801720	V4A; AISI 316	5,0 mm	ca. 12
CN8801730	V4A; AISI 316	6,0 mm	ca. 15
CN8801740	V4A; AISI 316	8,0 mm	ca. 20

Kauschen

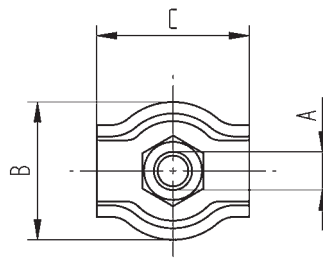
Thimble / Cosse-coeur / Redancia



#	Material	Drahtstärke	A	B	C	D
CN8802200	V4A; AISI 316	3,0 mm	M4	17	15	35
CN8802210	V4A; AISI 316	4,0 mm	M5	20	18	40
CN8802220	V4A; AISI 316	5,0 mm	M5	25	20	50
CN8802230	V4A; AISI 316	6,0 mm	M6	30	25	60
CN8802240	V4A; AISI 316	8,0 mm	M8	36	28	70

Duplex-Clip

Duplex-clip / Serre-câble double / Duplex-Clip



#	Material	Drahtstärke	A	B	C
CN8802100	V4A; AISI 316	3,0 mm	M4	15	18
CN8802110	V4A; AISI 316	4,0 mm	M5	18	20
CN8802120	V4A; AISI 316	5,0 mm	M5	20	25
CN8802130	V4A; AISI 316	6,0 mm	M6	25	30
CN8802140	V4A; AISI 316	8,0 mm	M8	28	35

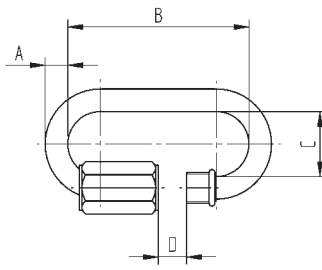
Simplex-Clip

Simplex-clip / Serre-câble simple / Simplex-Clip

#	Material	A	B	C	D
CN8802410	V4A; AISI 316	Ø 4	32	11,5	15
CN8802420	V4A; AISI 316	Ø 5	40	13,0	6,5
CN8802430	V4A; AISI 316	Ø 6	46	14,5	7,5
CN8802440	V4A; AISI 316	Ø 8	58	17,5	8,5

Schnellverschluss

Quick fastener / Maillon rapide / Chiusura rapida

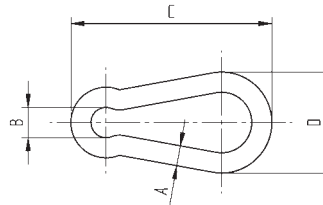


3

#	Material	A	B	C	D
CN8802310	V4A; AISI 316	Ø 4	Ø 6	40	20
CN8802320	V4A; AISI 316	Ø 5	Ø 7	50	25
CN8802330	V4A; AISI 316	Ø 6	Ø 8	60	30
CN8802340	V4A; AISI 316	Ø 8	Ø 11	80	40

Karabinerhaken

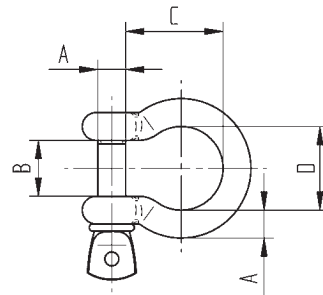
Carabiner / Mousqueton / Moschettone



#	Material	A	B	C	D
CN8802610	V4A; AISI 316	Ø 4	8	14	12
CN8802620	V4A; AISI 316	Ø 5	10	17	14
CN8802630	V4A; AISI 316	Ø 6	12	20	17
CN8802640	V4A; AISI 316	Ø 8	16	28	24

Schäkel

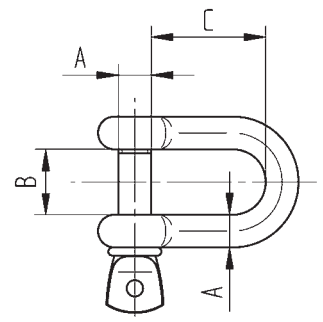
Shackle / Manille lyre / Grillo



#	Material	A	B	C
CN8802510	V4A; AISI 316	Ø 4	8	14
CN8802520	V4A; AISI 316	Ø 5	10	15
CN8802530	V4A; AISI 316	Ø 6	12	21
CN8802540	V4A; AISI 316	Ø 8	16	27

Schäkel

Shackle / Manille droite/ Grillo



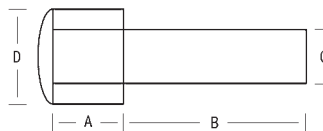
#	Material	A	B	C	D
CN8900100	Ti-6Al-4V	ca. 10	30	10	15

Titan-Endstück

Titanium end piece / Contre-écrou, titane / Terminale femmina in Titanio

für Drahtseilsystem, mit Innengewinde M6

for wire system, with inner thread M6 / pour câbles, taraudé M6 / con filettatura interna M6 per Fune



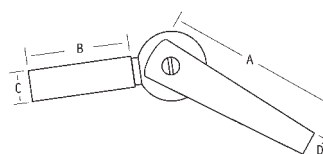
#	Material	A	B	C	D
CN8900200	Ti-6Al-4V	52	45	10	10

Titan-Gelenkstück

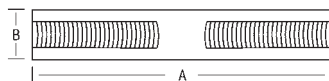
Titanium joint piece / Raccord articulé, titane / Giunzione snodata in Titanio

für Drahtseilsystem, mit beidseitigem Innengewinde M6

for wire system, with both sided inside thread M6 / pour câbles, avec filetage intérieur M6 aux deux extrémités / con doppia filettatura interna M6 per Fune



3



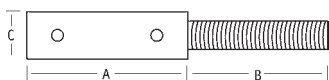
#	Material	A	B
geschliffen / satin finish / brossé / satinato			
CN8900300	Ti-6Al-4V	30	10

Titan-Verbindungsstück

Titanium joint piece / Connecteur droit, titane / Giunzione snodata in Titanio

mit beidseitigem Innengewinde M6 x 20 mm

with both sided inside thread M6 x 20 mm / taraudé M6 x 20 mm aux deux extrémités / con doppia filettatura interna M6 x 20 mm



#	Material	Drahtstärke	A	B	C
CN8900020	Ti-6Al-4V	5,0 mm	40	20	10
CN8900020	Ti-6Al-4V	5,0 mm	40	20	10
CN8900030	Ti-6Al-4V	6,0 mm	40	20	10

Titan-Seilklemme

Titanium wire clamp / Connecteur avec filetage titane / Terminale filettato in Titanio

für Drahtseilsystem, Außengewinde M6, mit 2 Madenschrauben

for wire system, with outside thread, with 2 grub screw / pour câbles, tige filetée M6, avec 2 vis sans tête / filettatura esterna M6, con 2 grani filettati per Fune